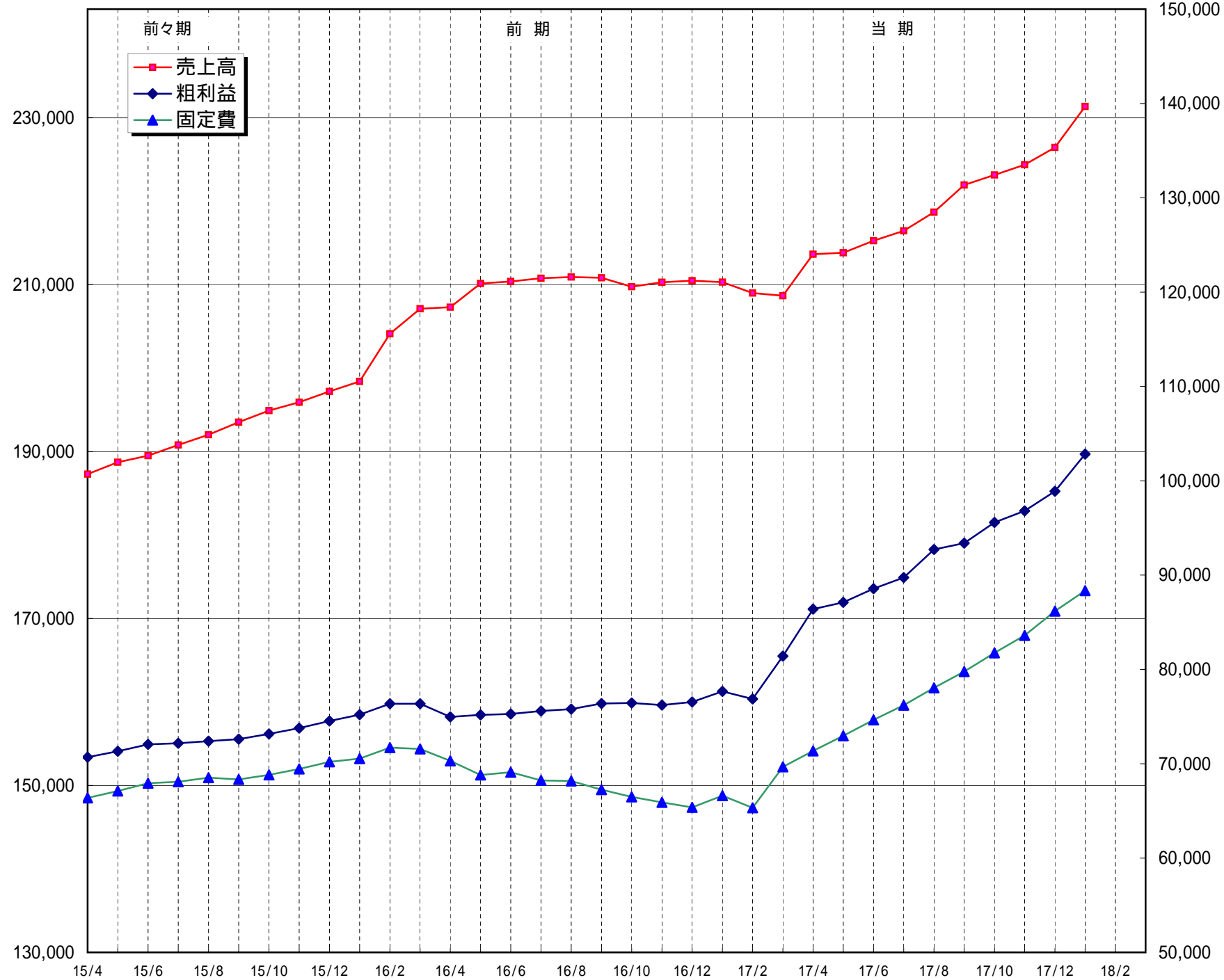


年計グラフ(売上・粗利益・固定費)

株式会社

第12期 H00.4.1-H00.3.31

単位:千円



期間	売上高	粗利益	固定費		
前々期	4	187,299	70,693	66,375	
	5	188,720	71,325	67,105	
	6	189,500	72,051	67,936	
	7	190,790	72,170	68,089	
	8	192,019	72,394	68,526	
	9	193,522	72,608	68,341	
	10	194,902	73,158	68,825	
	11	195,902	73,776	69,444	
	12	197,202	74,536	70,202	
	前期	1	198,402	75,199	70,544
		2	204,102	76,357	71,708
		3	207,102	76,357	71,564
4		207,290	74,970	70,301	
5		210,134	75,179	68,808	
6		210,368	75,274	69,103	
7		210,755	75,589	68,228	
8		210,911	75,795	68,173	
9		210,808	76,382	67,246	
10		209,749	76,441	66,483	
11		210,276	76,216	65,903	
12		210,473	76,543	65,377	
当期	1	210,297	77,665	66,614	
	2	208,982	76,864	65,324	
	3	208,668	81,413	69,664	
	4	213,641	86,387	71,359	
	5	213,808	87,110	72,960	
	6	215,255	88,557	74,655	
	7	216,442	89,744	76,204	
	8	218,682	92,714	78,051	
	9	221,930	93,384	79,769	
	10	223,130	95,584	81,754	
	11	224,354	96,808	83,606	
	12	226,433	98,887	86,181	
1	231,327	102,829	88,343		
2					
3					